



Shepherd Offshore

Energising Industry to support local, regional and global businesses

www.shepherdoffshore.com



Contents

1. Introduction
2. About Us
3. Our Aims
4. Our Vision
5. Our Mission
6. What We Do
7. Where We Are
8. Products to Projects
9. Your Specialist Service Needs
10. Capacity
11. Services
12. Lifting Solutions
13. Engineering Solutions
14. Logistics Solutions
15. Construction – Development
16. Construction – Development Milestones
17. Warehousing, Facilities, Development Areas and Abnormal Load Route
18. Project Management
19. Civil Construction / Drydock use
20. Client Feedback
21. Health & Safety
22. Case Studies
23. Case Study 1
24. Case Study 2
25. Case Study 3
26. Case Study 4
27. Facilities – Offshore Technology Park
28. Facilities – Neptune Energy Park
29. Facilities – Swans Energy Park
30. Clients
31. Contact Us



Shepherd Offshore is one of the UK's leading service providers and developers, providing responsible regeneration and job creation in the North East of England. Based on the North Bank of the River Tyne, Shepherd Offshore develops and operates these facilities, while supporting and attracting world class manufacturing.

We are a UK based company who have over 40 years of experience providing specialist services and developments to Oil & Gas, Power and Renewable industries based regionally, nationally and internationally.



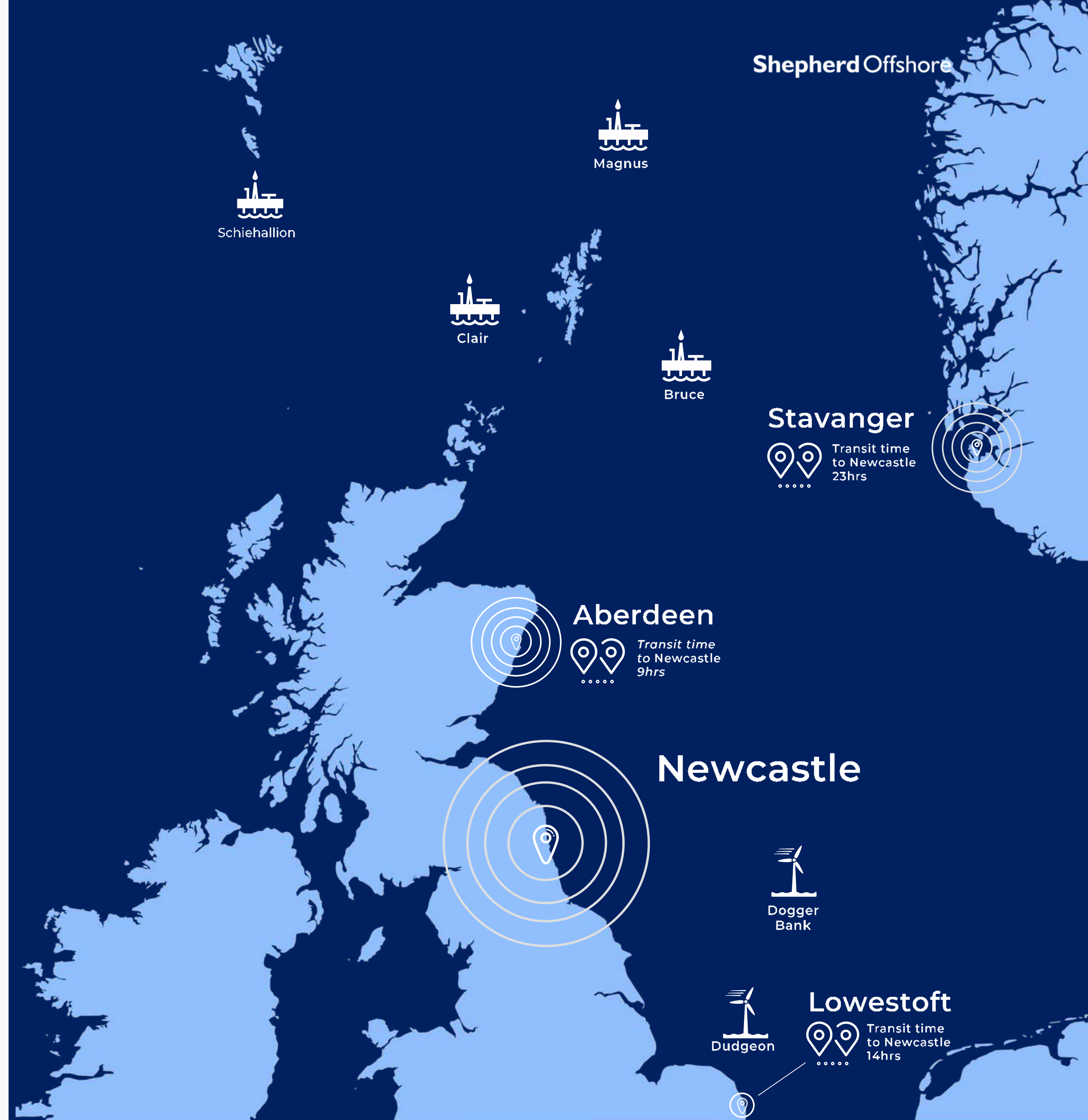
FREDDY SHEPHERD
Chairman



BRUCE SHEPHERD
Chairman



CHARLES SHEPHERD
Managing Director



We provide a fully integrated offshore supply base at our Offshore Technology Park, Neptune Energy Park and Swans Energy Park facilities.

We ensure safe and effective added value support and on-time delivery of products and projects.

Shepherd Offshore develops and funds bespoke facilities and manufacturing clusters, with the company focusing on providing value through first class services to compliment world class manufacturing companies so that they can compete globally.



350+

Reels are lifted over our quays each year



Offshore Technology Park – Newcastle Upon Tyne – Handles over 80 project mobilisations & demobilisations a year. Operating since 1987.



75,000

Tonnes constructed by
BAM in NEP dry dock

We aim to provide bespoke, fully integrated offshore supply bases which ensure safe and effective on-time delivery of products to projects, as well as numerous critical support services. Not only do we strive to meet our clients' standards, but the standards of their clients too; we endeavour to exceed expectations.

We are continually striving to create new capacity on the Tyne through responsible regeneration.

As a company we aim to grow with our clients to ensure capacity is never an issue.



2017 Neptune Energy Park – Dry dock - Project - BAM EDF Manufacture World's First Wind Farm Gravity Bases. 5 Gravity Bases were produced each GBF is made up of 1,800m³ of concrete and weighs over 15,000 tonnes.

Image ©EDF Energy Renewables





Our Mission & Vision

1. To be the UK's leading service providers for the Oil and Gas sector, Marine, Renewable Energy providers, Decommissioning and Construction industries. We aim to meet not only our clients' standards, but the standards of their clients too; we aim to exceed all expectations.



200+

Reel storage capacity
at Neptune Energy Park

2. To bring the once leading engineering heritage of the Newcastle Quayside shipyards back into operation and create opportunities for the local community and surrounding area. We are continually striving to create new capacity on the Tyne through responsible regeneration. Through investment and careful planning, our aim is to promote strategic land assembly, which in turn will transform the area and regional economy.



Company values to achieve our vision

Health and Safety: Personal and professional commitment to protecting the health and safety of our employees, our contractors and our customers every day.

Customer Focus: Promoting not only our company but the North East brand through strong, long-term relationships. Exceed our customers' expectations and deliver a more enhanced experience than that of our competitors.

Teamwork: Everyone is important. We treat our colleagues and all our associates with professionalism, dignity and respect. People can contribute, innovate and shine.

Quality Service and Performance: Delivering the highest quality service and value to our customers and purpose of making things happen.

Innovation: Strive to find ways to continuously improve and maintain high standards. Leading by example at all levels within the company.

Ethics: At the heart of the company, honesty, trust, and integrity are essential for meeting the highest standards.



What we do

The Company has strategically developed local infrastructure with capabilities and services attracting companies from the following industries to the River Tyne:
Oil and Gas, Marine, Renewable Energy, Power Generation,
Construction and Decommissioning.

All this is supported and communicated through our many corporate values based on responsible regeneration and partnership working.





Our Head Office is based in Walker, Newcastle Upon Tyne.
Our main facilities, Offshore Technology Park (OTP) and Neptune Energy Park (NEP) and Swans Energy Park (SEP) are approximately 1.3 miles apart.



Our 2,092 metre route from Neptune Energy Park to Offshore Technology Park is also supported by abnormal load routes for reels up to 400t.

We provide a fully integrated offshore supply base at both Offshore Technology Park and Neptune Energy Park, with safe, effective and on-time delivery of 'product to projects'.

Supported with in-house capabilities in logistics and other marine support service areas.



1,763_m
Of quay
frontage
available





133

Reels are approximately transferred between OTP & NEP annually

Our business manages both normal and abnormal marine load outs supported by heavy lift capacities, bespoke engineering projects with supporting fabrication services.

We also offer a wide range of transport and material management solutions, with in-house logistics and plant capabilities utilising our extensive infrastructure.

Our Port Facilities are serviced by heavy abnormal load routes providing direct access to major trunk roads and linking both facilities allowing transfer of products up to 400t.





Supporting your project requirements



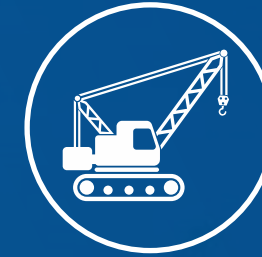
PROVIDING 365 / 7 / 24* SERVICES TO CUSTOMERS



40+ YEARS OF EXPERIENCE



1735m OF QUAY FRONTAGE OTP, NEP & SEP



DOCKSIDE CRANEAGE UP TO 800 TONNE SWL @NEP



DOCKSIDE CRANEAGE UP TO 325t SWL @OTP



OVER 60 ACRES OF DEVELOPABLE LAND



COMPANY DESIGN & CONSTRUCTION CAPABILITY



DEEPWATER QUAYS UP TO 9m BELOW CHART DATUM



IN HOUSE PLANT, TRANSPORT & CRANEAGE CAPABILITY



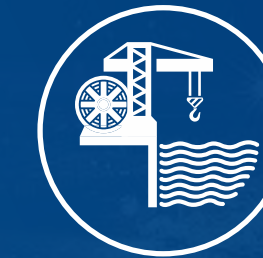
QUAYSIDE STORAGE OVER 17 HECTARES



TESTING CAPABILITY – TEST TANK OFFERS LENGTH OF 56M, WIDTH OF 38M, UP TO 12M DEEP AND A VOLUME OF 25.536³



WAREHOUSING & OFFICE SPACE - OVER 500,000 SQUARE FEET



QUAYSIDE HEAVY LOAD OUT CAPACITY UP TO 700 TONNE



COMPETITIVE DEVELOPMENT SCHEMES

- Heavy / Abnormal / Regular Lift Capabilities
- Material / Product Handling Services
- Rigging, Fabrication and Sea Fastening Services
- Vessel Berthage / Embarkation Teams
- Bespoke Client Factory / Unit Builds
- Heavy Load Out Quay Frontages

- Project Mobilisation and Demobilisations
- Abnormal Load Transport Routes
- Fabrication and Engineering Services
- Extensive Paved and Open Storage Facilities
- In House Freight Forwarding Service
- Wet Berth Facility (194m long & 56m wide)

- In House Project Management Team
- In House Development Team Offering Design & Build Options
- Infrastructure Development

* subject to notice and agreement



○●○○

Services we provide

We provide support services to manufacturing and construction companies which have co-located within Shepherd Offshore facilities. These companies have had access to cost effective service solutions and development opportunities, which are supported by an established infrastructure and sound logistical capability.



12. Lifting Solutions

Lifting Solutions

When cargo is being transported via sea from, or to our terminal, every lift undergoes detailed planning and co-ordination prior to arrival.

No product or cargo is treated the same. Each and every time product or cargo information is reviewed, the class of vessel understood, suitability of cargo for transit reviewed, method of loading and discharging established and communicated in the preparation phase and continually reviewed throughout the project.

Many projects demand detailed operation manuals, which must be approved by clients and warranty surveyors. Stowage and lifting plans are all reviewed and analysed, so that complicated lifting situations can be controlled step by step.



Complex tandem lift

Terex CC4800
SWL 493mt @26m

(Neptune Energy Park)



325t Hammerhead Crane
SWL 325t @24.5m (Offshore Tech Park)

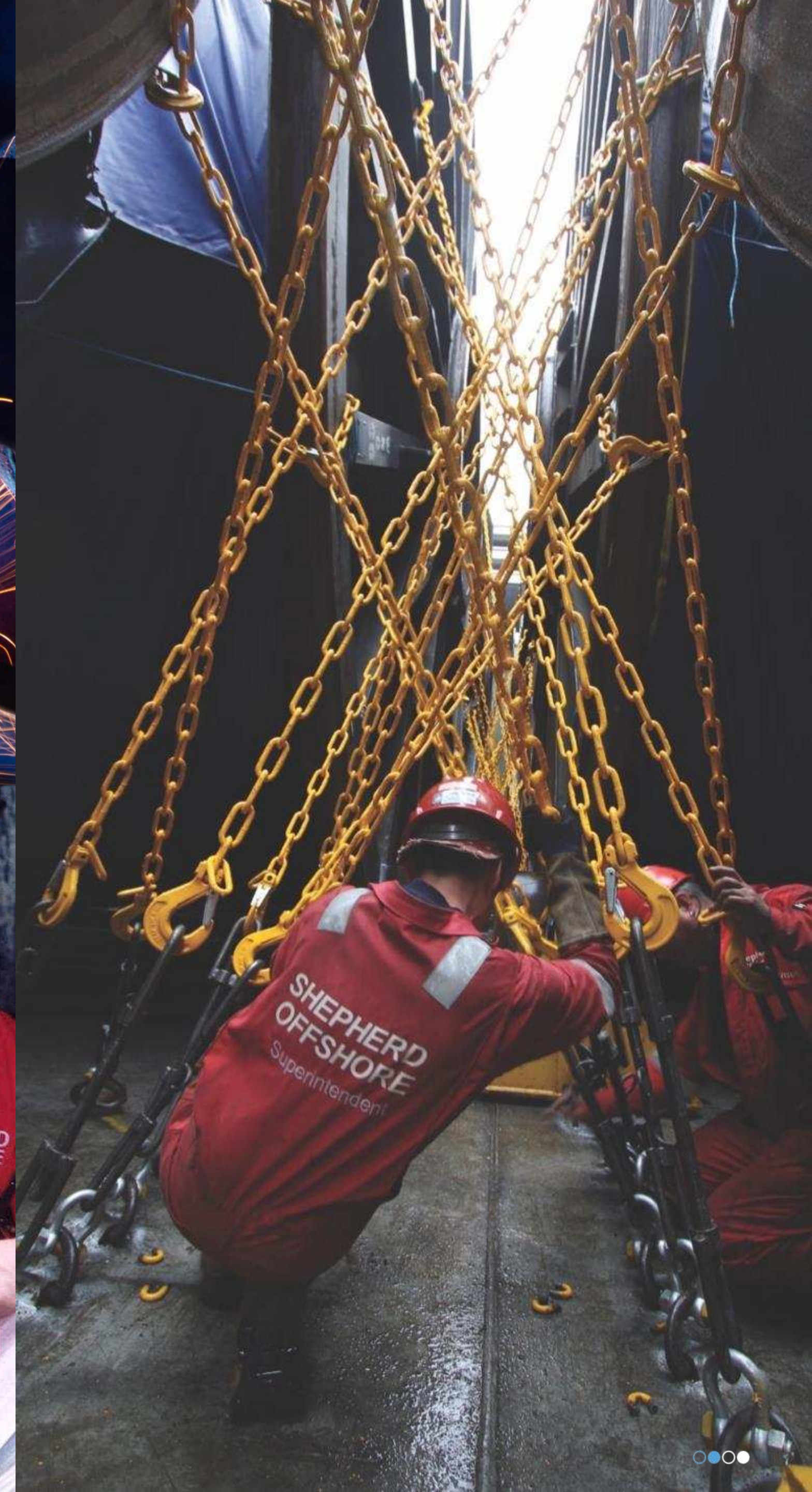


Engineering Solutions

With over 3,000 demobilisations & mobilisations Shepherd Offshore is one of Europe's leading solution providers for the marine & offshore industry. Whether it be cargo securing systems for transit, or bespoke equipment to assist in your supply chain.

We offer you a full turnkey service, providing everything from initial design through to final installation and commissioning.

Shepherd Offshore has established procedures, fully qualified coded welders & fabrication personnel and equipment to meet the highest standards within the industry. We are very competitive, with a highly motivated workforce and proactive supervision who pride themselves in their efficiency and flexibility in meeting every client's targets and goals.



Logistics

Shepherd Offshore works closely with clients to implement a total logistics management service. Our customers include many of Europe's leading manufacturing companies for whom we handle high-value, sensitive product and equipment on a daily basis under the strictest controls and procedures.

Whether your requirement is onshore or offshore, our track record for service and safety speaks for itself.

- Warehouse management and stock control
- Physical checks on receipt
- JIT supply and purchase order consolidation
- Pre-shipment checking and document preparation
- Sub assembly of components and parts
- Provision of storage and stock management
- Transport for equipment by road, sea and air



15. Construction - Development

Construction - Development

For over 40 years, Shepherd Offshore have been attracting, developing and funding bespoke facilities resulting in two world class manufacturing clusters. We have focused on providing bespoke first-class developments with co-location to essential services and assets.

We are continually striving to create new capacity on the Tyne & within the region, through responsible regeneration.

Through our long term investment strategy and careful planning, our aim is to continue to attract value manufacturers & their supply chain. Creating a win-win situation and a strong pipeline of capacity and opportunity for our region.

- Company Design & Build Capability
- Competitive Development Schemes
- In House development team offering Design & Build options



Bridon Bekaert
85,896 ft²



Baker Hughes Innovation Centre
52,423 ft²





Construction – Development Milestones since 2008

Year	Client	Location	SO Overall Est Spend	Description	Size	Comments
2008 / 2017	SOL	Neptune Energy Park	£13 million	SO Site Development Acquisition & Remediation of site Filling in of 3 x dry docks.	60 acres	Remediation of former ship yard / demolition of former slipways / repair & build of new quays.
2010	Clipper	Neptune Energy Park (1)	£5 million	SO Design & Build Office & Manufacturing Facility	52,423 ft ²	With external concrete yard. Now GE Oil & Gas (BHGE) Innovation Centre.
2012	Newcastle College	Wallsend Hadrian Rd	£1.7 million	Renewable Energy Academy	20,000 ft ²	State of the art training facility.
2012	Bridon	Neptune Energy Park (2a)	£9 million	SO Design & Build Office & Manufacturing Facility	85,896 ft ²	(Capacity to produce 700t reels) Total Project cost was in excess of £30million.
2012	Technip	Offshore Tech Park	£1.6 million	SO Design & Build Research & Development Center	19,677 ft ²	Development & build bespoke facility on 1.08 acres.
2013	SOL	Neptune Energy Park (1 & 2a)	£2.5 million	Heavy Load Out Platform / New Quays / Concrete storage areas	581,938 ft ²	Heavy Load Out platform can take blanket load of 7300mt.
2013	SOL	Neptune Energy Park (2a)	£2.5 million	Capital Dredge	51x231 m	Allowing up to 9m below chart datum.
2014	FHP	Neptune Energy Park (1)	£3 million	SO Design & Build Office & Manufacturing Facility	28,444 ft ²	FHP now part of IHC Group.
2014	Newcastle University	Neptune Energy Park (2b)	£0.5 million	SO Design & Build / Site Development / Construction	8,611 ft ²	Subsea University Training School.
2014	Technip	Offshore Tech Park	£1.5 million	SO Site Development / Construction New manufacturing facility VHAM	52,422.36 ft ²	World Leading Steel Manufacturing. - Demolition / Remediation.
2017	JDR	Neptune Energy Park (2b)	£4.58 million	SO Design & Build Office & Manufacturing Facility	28,000 ft ²	Bespoke Office & manufacturing facility.
2017	Technip	Offshore Tech Park	£3.5 million	SO Design & Build Head Office	25,000 ft ²	Relocation of Head Office in Newcastle to former High Yard part of ship yard.
2018	IHC	Neptune Energy Park (1)	£250,000	SO Design & Build extension to facility	13,000 ft ²	Increase in external operational area / load bearing concrete area & car parking spaces.
2018	SOL	Neptune Energy Park (2a)	£1.5 million	SO Site Development Test Tank Additional operational test area	560,000 ft ²	Increased operational area with high load bearing value (10 tonne per sqm.) Blanket load. Up to 35 tonne per square/m in specific locations.
TOTAL			£50.13 million			



Asset Summary

3 X Offshore Supply bases @ NEP, OTP & SEP

Deepwater Quays / Test Tank & Wet Dock

Quayside Storage Area Over 5 Hectares

Development Land @ NEP Over 60 acres available

Office, Warehousing & External Lay Down Areas Over 500,000 sq/ft available

Neptune Energy Park & Swans Energy Park are both within Local Enterprise Zone – Allows Enhanced Capital Allowances for companies within the EZ. <http://enterprisezones.communities.gov.uk>

Overall Site Assembly Over 80 acres on Tyne

Project Specific Areas

Abnormal Load Route can transport reels up to 400mt

Heavy load out waterside NEP & OTP



Project management

We have a proven track record of delivering support in a responsible and timely manner. We provide efficiency & flexibility, focusing on preventing costly delays whilst keeping your project on track.

○●○○●
Civil Construction

Year	Client / Associated Parties	Project / Scope	Description	Comments
2008/2010	Bouygues / Volker Stevin	Tyne Tunnel 2 (TT2) / Manufacture 4 x 90m Tunnel structures	Concrete Manufacture 4 x structures.	Used construct new 1.6km tunnel under the Tyne. Construction cost £260m
2012 / 2013	Grahams Construction / Associated British Ports	Humberside Port Development / Manufacture 1 x 7000ton concrete structure	1 x 80m x 30m x 5.6m Floating Pontoon.	Part of development of Humberside floated from Tyne to Humberside
2013	O'Brien	Demolition of vessel called Ice Maiden	Former Ice breaker decommissioned	On behalf of A&P Tyne
2015	A&P Tyne	Vessel Bibby Sapphire Dry docking / Repairs	Inspection / Repair	Critical services
2016 / 2017	BAM / EDF	Manufacture 5 x Gravity Base Towers	World first – bespoke design of Gravity Bases	5 Gravity Bases were produced each GBF is made up of 1,800m ³ of concrete and weighs over 15,000 tonnes.

Several Construction projects utilised one of the largest dry dock facilities in the UK (217m / 32m) and were supported by heavy lift capabilities & services on each site.





Client Feedback

“The all round ability and professionalism of Shepherd Offshore in delivering a world-class facility for the offshore wind industry has truly impressed us”

Chairman, Clipper Wind Power Inc USA



“The communication, safety and organisation throughout this process has been excellent. SOS and TU interaction has been really professional. Great job done safely, without compromise to quality”

Applications Manager, Technip FMC



“BP were extremely pleased with the overall performance of Shepherd Offshore in loading BP Skarv reels. The overall impression was of a very well managed and safe site with an understanding of the complexities involved and the need for flexibility”

Project Manager, Technip Oceanic



“Their professionalism has been exceptional, enabling us to meet the tight shipping schedules inherent in the offshore industry”

CEO, Baker Hughes



“It is a very professional set-up and [the] quayside crew is very competent and HSE aware. I would happily use or recommend Shepherd’s for future operations”

Logistic Advisor, DNO



“Shepherd Offshore personnel have consistently worked to high quality professional standards”

Principle Naval Officer, Houlder Ltd



Health and Safety

Safety Comes First Every Time

Shepherd Offshore strive to eliminate all injuries, occupational illnesses, unsafe practices and environmental incidents from our activities. We believe that our work is never so urgent or important that we cannot take the time to do it safety and in an environmentally responsible manner.

○●○○●

Case Studies

We are proud to be supporting and working with the biggest names in the industry on a variety of projects throughout the world.



Case Study 1

Bridon/Hydralift Amclyde Inc

Date: 27 to 28/04/16

Vessel: MV Berit

Info:

Complex Heavy Lift Quay to Vessel with Centre Gravity Offset, this was analysed and appropriate rigging arrangement were employed. The lift quay to vessel was onto load spreading materials in the hold good planning and precise control allowed for a successful lift. Overall efficient and safe performance carried out resulting in high score from client and third parties.

Agent: Gillie & Blair

Freight Forwarder: SLS Ltd

Client: Bridon

Project: Hydralift Amclyde Inc

Cargo: Steel Wire Rope 50mm

Location: Neptune Energy Park Heavy Load Out Platform (NEP 2A)

Scope: Transport Handle Offload to Radius / Lift Load 5 x Reels /
Max Gross Reel Weight 389mt - Quay to Vessel's Hold onto load spreading beams

Max Hook Weight of Lift(s): Approx 410mt @ 28m radius (Dims 5500 x 6832 x 5700)

Type Of Lift: Complex / Contract Lift / Offset centre of gravity

Duration Of Loading: 1 x Shift



PROVIDED IN HOUSE
PLANT, TRANSPORT &
CRANEAGE CAPABILITY



DEEPWATER QUAYS
UP TO 9M BELOW
CHART DATUM



PROVIDED DOCKSIDE
CRANEAGE UP TO
800 TONNE

410mt

Max hook weight of lift
(Approximately)

Client Feedback

Overall Performance: 10

Timely delivery of service: 10

Communication: 10

Quality of service: 10

Health and safety awareness: 10

Happy to recommend Shepherd

Offshore Ltd to others: Yes





Case Study 2

Bam Nuttal Ltd/EDF

Date: 04/2016 to 06/2017

Vessel: Barge & Tugs

Info:

High level of planning & coordination / Additional time setting up a customized lifting arrangement working at height / Complex Heavy Lift / with a particular focus on protection of furniture. The lifts barge to Quay SPMT was then transferred by SPMT to over cranes at the drydock to be top and tailed / then lifted into the drydock concrete gravity base. Overall efficient and safe performance supporting a ground breaking new design in offshore wind turbines.

Shipment: x 4

Agent: Osprey

Shipper / Manufacturer: Smulder Group

Client: BAM Nuttal Ltd / EDF

Project: Blyth Wind Turbines

Cargo: 5 Lower & 5 x Upper Tower Sections of GBF Turbines

Location: Neptune Energy Park Heavy Load Out Platform (NEP 2A) / NEP 2B / Drydock

Scope: Preparation / Set up Rigging Arrangement / Discharge Offload to Quay SPMT's / Lift 10 x Tower Sections 2 x per gravity base / Max Gross Tower Section Weight 353mt –

Barge to Quay to SPMT's / Tandem Lift to Concrete Gravity Bases In Dry Dock

CC4800 Max Hook Weight Capacity of Lift(s): Approx 403mt @ 30m radius (450mt ballast added)

Dimensions: Example Lower Section



PROVIDED IN HOUSE PLANT, TRANSPORT & CRANEAGE CAPABILITY



PROVIDED MARINE TEST AND CONSTRUCTION CAPABILITY IN DRY DOCK



PROVIDED DOCKSIDE CRANEAGE UP TO 800 TONNE

403mt

Max hook weight of lift (Approximately)

Client Feedback

'Thanks for your support and professionalism over the project, hopefully we'll see each other again with more GBF's'

Senior Agent BAM Nuttall Limited

Detailed Description	Qty	Estimated Dimensions (m)	Estimated Weight (Te)
----------------------	-----	--------------------------	-----------------------

Bottom Shaft Sections	2	L = 29.78m x Ø6.5m	334
-----------------------	---	--------------------	-----

Type Of Lift: Complex / Contract Lift / Product Protection / Specialist Lift Arrangement.

Duration Of Off Loading Barge: 2 x Shifts - Per Tower Section





Case Study 3

Bridon Rope Manufacturing Facility

Location: Neptune Energy Park **Date:** 2010 to 2012

Client: Bridon Bekeart

Project Management Partners: Shepherd Offshore / Elliot Associates

Construction Partners: Tolent, Obrien's, Ian Belsham, 3E

Cost: Over £30million

Building Square Footage: 85,896 ft²

(approx. Length 140m x width 74m) Overall Site (approx. 214m x 110m)

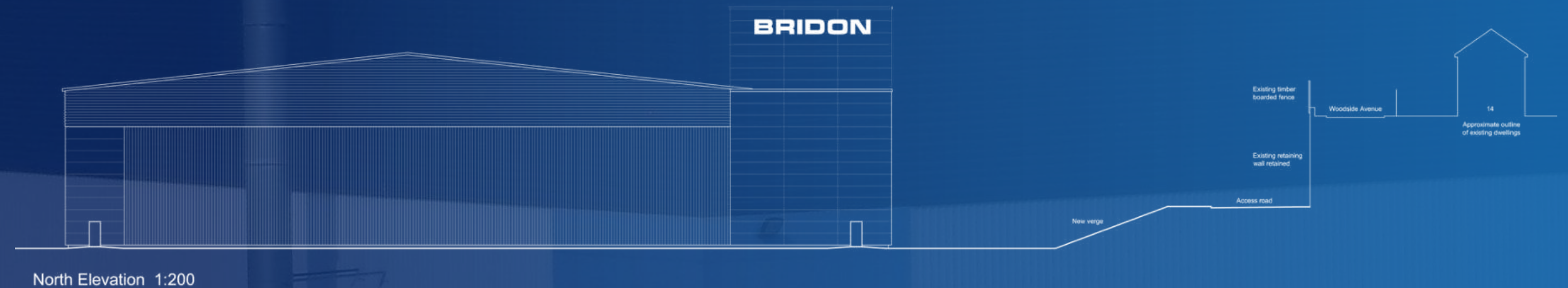
2010: 6 month long site remediation, involving the removal of shipyard furniture e.g. slipways, as well as ground preparation.

2011 -2012: Facility completed in 14 months, from initial planning & area preparation through to commissioning and handover.

New quay construction and heavy load out pad.

Info:

Facility comprises of a number of overhead cranes with capacities ranging from 10 tonnes to 150 tonnes, take up stands that coil the completed rope onto reels are manoeuvred on rail bases for discharge onto road vehicles or via the heavy load out area, where they are loaded onto boats for onward shipment via the North sea.



Client Feedback

“The ropes produced at this state-of-the-art facility will expand the boundaries of what is possible for customers across the sector. Bridon Neptune Quay has been built to help us solve our customers’ most significant technological challenges”.

Bridon Group CEO, Jon Templeman

700t

Reel production capacity in facility



PROVIDED IN HOUSE PLANT, TRANSPORT & CRANEAGE CAPABILITY



PROVIDED DOCKSIDE CRANEAGE UP TO 800 TONNE



PROVIDED 24HR SERVICE TO CLIENT



COMPANY DESIGN & CONSTRUCTION CAPABILITY





Case Study 4

ENI/SAIPEM/TECHNIP FMC

Date: 04/07/17 to 12/07/17

Vessel: Normand Cutter

Info:

A timely and efficient vessel berth and release. Spooled 13 km of umbilical with ancillary cargo & Reel loaded with supportive scopes. Safety was a primary concern, and excellent levels of planning, management and efficiency meant that the project was completed well within the expected time frame.

Agent: Clarksons

Client: ENI / Saipem / Technip FMC Umbilical's Ltd

Project: Ochigufu

TUL: Spooled Umbilical Load out / Setting Up Process / Lifting Transferring Ends via Dockside & Mobile Support Cranes

Location: Offshore Technology Park (Central Quay)

Saipem: Quay Set Up / Vessel & Logistics Support: (via Clarksons)

Scope: Mobilisation Umbilical & Reel Loadout / Hotworks Seafastening: 1 x 13km Umbilical Loadout Carousel to Carousel / Handling & Transferring Umbilical Ends (xt per). /Complex Lifts / Lifts from carousel via mobile cranes e.g LMT1250 Crane with extended fly jib transferring ends from Technip top of carousel to spooling path & to radius of (Dockside) 325t HH Crane/Logistic Support/Vessel Support / Hotworks Fabrication / Seafastening Lashing & Securing Reel on board vessel deck.



PROVIDED IN HOUSE PLANT, TRANSPORT & CRANEAGE CAPABILITY



PROVIDED 24hr SERVICE TO CUSTOMER



PROVIDED QUAYSIDE HEAVY LOAD OUT CAPACITY UP TO 700 TONNE

13km

Of umbilical spooling

Client Feedback

Overall Performance: 10

Timely delivery of service: 10

Communication: 10

Quality of service: 10

Health and safety awareness: 10

Happy to recommend Shepherd

Offshore Ltd to others: Yes



Site plan – Offshore Technology Park



Site plan – Neptune Energy Park





Site plan – Swans Energy Park





Clients supported through our facilities and expertise

Shepherd Offshore have attracted blue chip companies to invest and operate in the region such as TechnipFMC Umbilicals, GE Oil and Gas, Baker Hughes, IHC, Bridon-Bekaert, BAM Nuttall, JDR Cable Systems, EDF Energy. Companies that have been supported through our facilities are Subsea 7, Saipem, McDermott, Total, BG, BP, Shell, Anadarko Petroleum, ExxonMobil, Dong Energy, Chevron etc.



Contact Us

Shepherd Offshore operates within a highly effective and dedicated management structure in order for projects to be accelerated and executed efficiently - at all times.

Our management team is focused on building mutually beneficial long term relationships, based on first-class service, speedy decision making and always delivering on our promises.

Please contact us regarding any enquiries that you have relating to the many services we provide.



TEL: +44 (0) 191 262 9614



headoffice@shepherdoffshore.com



www.shepherdoffshore.com



Shepherd Offshore Thank You

Swans Energy Park, Station Road, Wallsend, Newcastle upon Tyne, NE28 6EQ, United Kingdom





Neptune Energy Park, Fisher Street, Walker, Newcastle upon Tyne, NE6 4LY, United Kingdom



Offshore Technology Park, Rendle Road, Walker, Newcastle upon Tyne, NE6 3NH, United Kingdom