

NORTH EAST ENGLAND WORKS FOR HEALTHY AGEING

invest | north east
england



Overview

More than 10% of the global population is over 60, and by 2050, this is predicted to rise to more than a fifth. Our society is ageing and with almost 12 million over 55s in the UK currently, there has never been more pressing demand for innovations that help us meet the needs of our oldest citizens.

With a globally competitive life sciences ecosystem, established clusters connecting investors with customers, collaborators and supply chains, and a Government commitment to industry partnerships, North East England is a test bed for market development in the Healthy Ageing sector.

The opportunity to design, test and commercialise health management solutions and smart assistive technologies is here.



Jump to
↓

Overview

Why North East England

Innovation centres

Technological and digital expertise

Providing the solutions to help people live independently

Leading research centres and collaborative practices

Skilled and experienced workforce

Connectivity and property

Our service

Why North East England



Be part of a collaborative cluster for innovation

Access exceptional facilities and engage with the National Innovation Centres for Ageing and Data, as well as the National Institute for Health Research at Newcastle Helix, which is also home to a collection of innovative SMEs.



Plug into a supply chain of pioneering and established partners

The region supports a rich network of researchers, commercial and support organisations all focused on healthy ageing.



Find talent, skills and capability

With five thriving universities, the region has over 67,000 students studying STEM related subjects, while over 32,000 highly-skilled local professionals are employed in the digital and technology sector and over 7,000 in the life sciences sector.



Keep people learning, moving and growing together with your products

As part of a collaborative NHS and business network, companies located here can test profitable products and services made with insight from older people.



Find integrated resources

With business experts, researchers, and the public co-designing solutions using the latest data and AI, the North East is a hub for ageing intelligence, healthy longevity and lifelong wellbeing.



Gain insight into leading research and shared practice

The region is leading the way on healthy ageing with a cross-organisational ecosystem of academics, healthcare professionals and industry experts.



Stay connected

With road, rail and port access to the rest of the UK and the world, the region is the ideal placed to reach global markets and customers.

Innovation centres



National Innovation Centre for Ageing (NICA)

Supported by the UK Government and Newcastle University, and the only one of its kind in the UK, NICA is leading the world in working with business to co-develop products and services for a world in which we will all live better for longer.

A site for technical, industrial and academic partnership, NICA is a live laboratory for the observation of demographic dynamics and their narratives, where solutions can be proven.



CPI

CPI act as a catalyst to bring together investors, academia, government and others. Their expertise and facilities transform ideas into market-disrupting medical devices, wearables, and diagnostics that improve lives. As well as world class innovation labs and facilities, CPI can offer investors access to multidisciplinary experts and their network of investors and partners. CPI is also the process manufacturing partner in the High Value Manufacturing Catapult, which provides access to world-class research and development facilities and expertise.



The Urban Observatory

Newcastle University hosts both the UK's biggest sensor operation with more than 1,000 sensors across Newcastle and Gateshead, and the UK's largest set of open, environmental monitoring real time data, through which we can understand how independent town and city living for ageing people can be supported.



National Horizons Centre

Teesside University's centre of excellence for the biosciences and healthcare sector, the National Horizons Centre brings together industrial and academic talent with world-class facilities to create real-world impact in areas of core strength, including disease specific research, bio-manufacturing, and digital analytics and machine learning.

North East England is home to the UK's highest concentration of applied academics in ageing.

From research into dementia and age-related diseases, to developing wearable technology that supports independent and healthy living for longer, innovation is thriving in the North East, with collaboration involving industry professionals, academics and the NHS.

Technological and digital expertise

As a hub for digital technology and software development, North East England has been driving the healthy ageing agenda.



Data and Artificial Intelligence

Offering a fully-tailored service, the [National Innovation Centre for Data](#) provides the technical expertise to help businesses gain insight to launch new products and services.

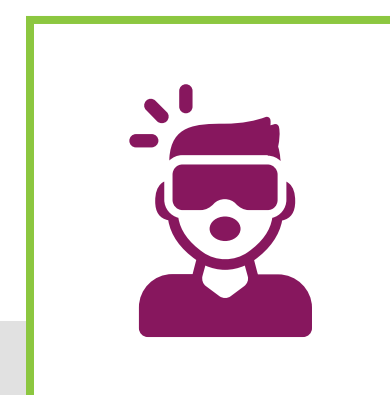
The National Innovation Centre for Ageing's Ageing Intelligence Insight Data Platform is also a comprehensive tool, built to leverage human knowledge and experience through big data and artificial intelligence technologies, adding meaning to enable the constant generation of new insights.



Wearable Technology

Develop, prove, prototype and scale up the next generation of wearable technology with guidance on design, materials and manufacturing from [CPI](#).

[Northumbria University's PaCT Lab](#) also provides access to GPS, accelerometry and diary data that can be used to understand ageing and mobility patterns for monitoring solutions for social care, and products and services that enable independence in older people.



Immersive Technology

[PROTO: The Emerging Technology Centre](#) is Europe's first digital production facility of its kind, offering businesses subsidised access to 3D scanning, an immersive technology lab, a virtual production stage as well as motion capture and sound recording to create new products, services or experiences. The impact of immersive technologies on age-related declines, including sensory and motor changes, and cognitive and social changes has been well documented and the North East of England offers investors specialist equipment, expertise, and business support to bring new products to market for an ageing population.



Internet of Caring Things

Businesses can explore deep, future-oriented innovations related to emerging digital technologies such as the Internet of Things, providing a low-risk forum for exploration in to new disruptive technologies. Businesses can interact with programmes to facilitate networking and product development. Programmes are run by NORTH Lab, the Digital Disruption Network and National Innovation Centre for Ageing.

Promoting independent living for longer

In addition to the Internet of Caring Things Programme, the region is paving the way in using digital technology to overcome the challenges facing a growing and ageing population. Key projects include:



Transforming housing

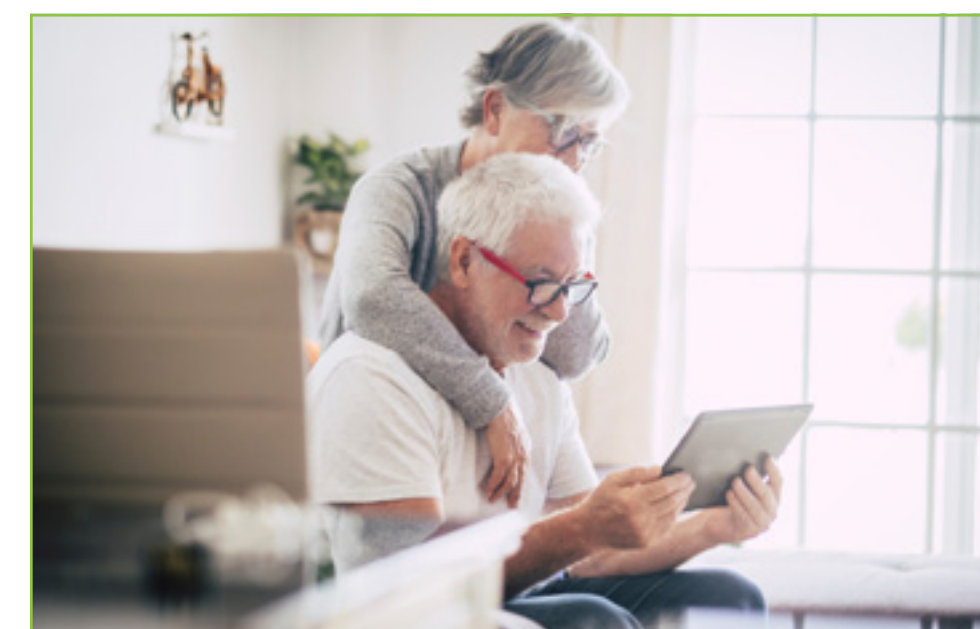
Newcastle University's Future Homes project, part of the city's Specialist Housing Delivery Plan to increase personal choice and independence for an ageing society, is developing new housing exemplars that fit current needs while anticipating adaptations.

Sunderland is one of two national Connected Places Catapult pilots providing a low-risk, real-world environment where innovators can deploy solutions, capture data and improve performance to bring forward viable Homes for Healthy Ageing.



Mobility and assistance through robotics

The National Innovation Centre for Ageing is the first in the world to evaluate Piaggio's 'gita' robots, which communicate through sound, light, touch and 360 degree vision, carrying cargo to help older adults keep their hands free and stay active to maintain mobility and social interactions.



Facilitating financial and legal independence

Older people often feel locked out of modern ways to access financial and legal services, but North East focus groups, such as VOICE, collaborate with businesses and facilitate discussions to further understand barriers for the development of new tools.



Keep people learning and moving through entertainment and technology

OpenLab and the Ageing Academy are working to address the challenges of future living through the design of innovative digital solutions to assist with exercising memory and mobility into old age.

The National Innovation Centre for Ageing is also working alongside emerging technology companies in the field of virtual interaction to understand how virtual reality can both entertain and establish connections, improve cognition, and support cognitive assessments.

Work with leading centres for research and practice

The opportunity to collaborate with world-leading research centres and clinical experts in the North East underpins the very essence of the region's healthy ageing sector.

Newcastle Biomedical Research Centre (BRC)

Funded by the National Institute for Health Research, this is the country's only BRC to focus on converting lab-based research on ageing and long-term conditions into practical, meaningful benefits for patients, the public and the health and care system.

Northern Health Science Alliance (NHSA)

The NHSA works to achieve greater efficiency and scale across northern health partnerships, building productive clusters across academia and industry to support the adoption and implementation of solutions evaluated in the real-world with the appropriate academic rigour.

Its work has ranged from early scientific discovery with our universities through to translational research and product co-development with NHS members.

Academic Health Science Network North East and North Cumbria (AHSN NENC)

The AHSN NENC works with industry to facilitate the sharing of NHS expertise that is crucial to the development, testing and deployment of products and services. Providing healthcare innovation across the region, it is a trusted intermediary between the NHS, academia and industry. Through the Innovation Pathway, the AHSN NENC broker access to a range of expert support and services across the health and care sectors that support NHS innovators and companies to realise the commercial and economic potential of their ideas.

Newcastle Health Innovation Partners (NHIP)

One of eight Academic Health Science Centres in the UK, NHIP works collaboratively to foster real-world benefit from world-class research education and clinical practice, improving the population's health and generating economic growth in the region.

The Clinical Ageing Research Unit (CARU)

CARU is a clinical research facility providing a high quality, patient-friendly environment for phase II-IV clinical studies in the older patient. Its primary aim is to facilitate the development of early assessment and intervention strategies targeted at age-associated degenerative conditions.

Newcastle upon Tyne Hospitals NHS Foundation Trust

A valuable clinical partner for industry and academia, the Newcastle Hospitals Trust is particularly important in a region where health and ageing inequality is disproportionately high.

Housing the Joint Research Office supporting the development and delivery of world-class experimental, translational and clinical research, in 2019, it became the world's first healthcare organisation to declare a climate emergency, committing to carbon neutrality by 2040.

Supply Chain North East

A network of business and investors, Supply Chain North East supports core competencies, helping its members make the most of new technology to understand improvement needs and identify suitable opportunities to drive productivity and innovation.

Skilled and experienced workforce

North East England has the talent and skill to support the UK's healthy ageing priorities.

Skills for now

Whether established in the region, or looking to relocate, businesses in the North East consistently attract people from entry level to c-suite that are highly skilled in fields ranging from major pharmaceutical manufacturing to research.

GSK, Organon, Quotient Sciences, Piramal Pharma and Accord Healthcare are just some of the firms that have chosen the North East to set up operations. The North East has more than 165 life science companies employing over 7,000 talented and highly trained individuals.

Skills for the future

With over 125 undergraduate and postgraduate life science courses and world-class research centres, the North East has one of the UK's highest clusters of science, technology, engineering, and mathematics (STEM) students. There are over 67,000 STEM students in our region's five universities. In addition, a high proportion of graduates choose to stay in the region following their graduation, ensuring health and life science companies can recruit from a large talent pool.

Newcastle University's OpenLab is a research group at the cutting edge of human centred design (HCI), design futures and social innovation. It hosts the EPSRC's Centres for Doctoral Training in Digital Civics,

Cloud Computing for Big Data, and the EPSRC Digital Economy Research Centre, providing life science companies with a pipeline of PhD candidates.

While the region's further education and university technical colleges provide a comprehensive range of software and IT courses to train the next generation of digital and tech experts, private sector partnerships allow our universities to deliver bespoke courses that equip students with the skills they need for a STEM career. For example, Lockheed Martin has been collaborating with Northumbria University, the 2022 Times Higher Education University of the Year, for the regional development of space skills, research and technology.

Students studying at local Higher Education institutes



7,785

Computer Science



9,675

Engineering and Technology



8,100

Biological Science



15,710

Subjects allied to medicine

Source: HESA 2020/21

Connectivity and property

In addition to an enviable air, road, rail and port infrastructure, the North East can offer health and life science companies quality office and laboratory space.

Newcastle Helix is a life science and digital development which brings together industry leaders, businesses and researchers. The site combines commercial and residential space with research, co-working and education facilities, with on-site support to enable private public sector collaboration. Situated on Newcastle Helix is:



- **The Biosphere**, a space dedicated to the commercialisation of life science research and development, is home to fast-growing and dynamic life science SMEs, and is made up of Category II laboratories, grade A offices, conference and meeting facilities.
- **The Catalyst**, home to both the National Innovation Centres for Ageing and Data, creates a supportive ecosystem for businesses to work alongside world-leading thinkers and creatives to grow and develop ideas, products and services in the ageing and data sectors.

North East BioPharma Manufacturing Cluster

A significant proportion of the UK's pharmaceutical output is produced in the North East, with many companies, including Piramal Pharma Solutions, Organon, and Sterling Pharma Solutions, clustered in areas of strategic advantage, such as Cramlington in Northumberland.

Newcastle University's **Campus for Ageing and Vitality** will establish the world's premier centre for healthy ageing and living. Working in partnership with local authorities and hospital trusts, the university has developed a master plan to create this world-renowned centre for ageing and health in Newcastle. The masterplan will provide unique solutions for living, leisure, learning and employment as people age with a focus on health, wealth and wellbeing.

The purpose-built campus, designed using insight from the university's global leadership in ageing research, will bring together industry, the NHS and academia, and provide innovative solutions for living, leisure, learning and employment to help people live longer, healthier lives.



County Durham's **NETPark**, which exists to accelerate the commercialisation of medical technology products, is one of the UK's few premier enterprise parks dedicated to science, engineering and technology, providing a mix of world-class laboratory, clean room and office space. It is home to both the CPI-managed High Value Manufacturing Catapult and North East Centre of Excellence for Satellite Applications, as well as the National Centre for Healthcare Photonics.

Our service

Invest North East England is the first point of contact for companies looking to locate and invest in our region.

Our highly experienced team opens the door for businesses to the region's network of specialist organisations and individuals with the information, support and advice essential for businesses looking to locate in North East England.

We co-ordinate investment enquiries on behalf of our region's local authorities to ensure businesses are able to make the best decisions based on a wide array of information.

Our team has access to the UK Government, support agencies, sector specialists, universities, colleges, knowledge networks, finance streams and business organisations, helping your transition and move to North East England run smoothly.

Invest North East England supports businesses with a whole range of practical relocation support and advice including:



Advice on availability of land and property and costs



HR support, including wage comparisons, training, recruitment and local market information



Information and statistics on the local economy, demographics, infrastructure and labour market



Support for key employees and their families moving to the area



Organising visits to the region and meetings with key stakeholders



Introductions to supply chain knowledge networks and technological expertise



Access to finance – guidance on the availability of financial assistance and grants



A personal account manager dedicated to your project with a full aftercare programme

Want to take the next step in locating or expanding your business in North East England, or just need to find out more?

Get in touch today.



NORTH EAST ENGLAND WORKS.

+44 (0) 191 519 7215

@InvestNEEngland enquiries@inee.co.uk

INVESTNORTHEASTENGLAND.CO.UK



invest | north east
england